



Roberts Bros.

Independent Family Funeral Directors

RB

Cremated Remains Guide

Spring 2024

There is an ever evolving range of ideas and choices available in respect of the Cremated Remains of our loved ones.

This booklet is intended as an outline and guide through a number of these options but it is important to remember that the choices in this guide are not exhaustive and as such please do not hesitate to speak to us about any other ideas which you may have.

All images within this booklet are reproduced for illustrative purposes to outline options available and are not necessarily representative to sizes and colours - all natural products have slight variations beyond our control.



How are Cremated Remains released from Crematoria?

All crematoria in our local area, whether local authority or privately owned, currently release Cremated Remains as standard in a simple cardboard presentation box similar to the one pictured opposite (colours may vary).

The presentation box has a secure two-section construction and Remains are sealed in a discreet paper lining.

All presentation boxes are labelled with the individuals name, cremation number and the name of the crematorium and are accompanied with a Certificate of Cremation which is required should you wish to inter remains in a formal setting or to have the scattered at an alternative crematorium.



Please note that some crematoria do offer limited ranges of alternative urns and caskets should you wish to contact them directly to enquire further.

Our Family, Helping Your Family, Since 1952

www.pentrebroughton.co.uk 01978 756997 (24hrs)

Where Can Burial of Cremated Remains Take Place?

Cremated Remains are generally interred in a formal setting, the three most common of these being listed below, however it is not uncommon to inter Cremated Remains upon private land - obviously you must always have the landowners permission to do so and please note that removal of Remains without an appropriate license is illegal.

Burial in a Churchyard

Many local Churchyards in this area provide the facility for Cremated Remains to be interred within their grounds and a memorial placed accordingly; some in designated family plots to solely accommodate Cremated Remains and some only in existing family graves. Generally there must be either a near family or geographical link to the particular Churchyard in question for the Incumbent to accept such burials. It is also important to note that plots in a Churchyard are not owned by families - fees paid are for the privilege of being buried on Holy Ground belonging to the church not to purchase individual plots.

Burial in a Cemetery

Likewise all local cemeteries offer the facility to accept interment of Cremated Remains and the positioning of appropriate memorials. Again plots are either designated solely for cremated remains or the burial is within an existing family grave space. Cemeteries are generally council run and have strict rules on grave ownership to allow interments, memorial works and how a grave must be maintained in the long term. Cemetery fees vary depending on whether the deceased was/wasn't a resident of the area in which the cemetery is situated.

Natural Burial sites

Natural or 'Green' Burial sites are set usually in woodland areas plots do not have 'traditional' memorials upon them and most will usually remain un-marked so as to retain the natural beauty of the area. If the burial is taking place in a casket they will insist upon it being as simple and as natural as possible (such as those made from cardboard, banana leaf or wicker) however some Green Burial sites prefer cremated remains to be scattered directly into an open plot - rules do vary greatly between site.

Our Family, Helping Your Family, Since 1952

www.pentrebroughton.co.uk 01978 756997 (24hrs)

Traditional Solid Oak Caskets



Three Spires ~ £75.00



Regency ~ £90.00



Lancelotte ~ £100.00

The above caskets are designed with interment in mind, they are made from Solid Oak and are provided as standard with lowering rings and a matching engraved name plaque.
(Available without lowering rings upon request)

Our Family, Helping Your Family, Since 1952

www.pentrebroughton.co.uk 01978 756997 (24hrs)

Traditional Solid Mahogany Caskets



Three Spires ~ £75.00



Regency ~ £90.00



Lancelotte ~ £100.00

The above caskets are designed with interment in mind, they are made from Solid Mahogany and are provided as standard with lowering rings and a matching engraved name plaque.
(Available without lowering rings upon request)

Our Family, Helping Your Family, Since 1952

www.pentrebroughton.co.uk 01978 756997 (24hrs)

Traditional Solid Double Caskets

Double Three Spires ~ £145.00



The above casket is designed with interment in mind, available in either Solid Oak or Mahogany, and is provided as standard with lowering rings and a matching engraved name plaque.
(Available without lowering rings upon request)

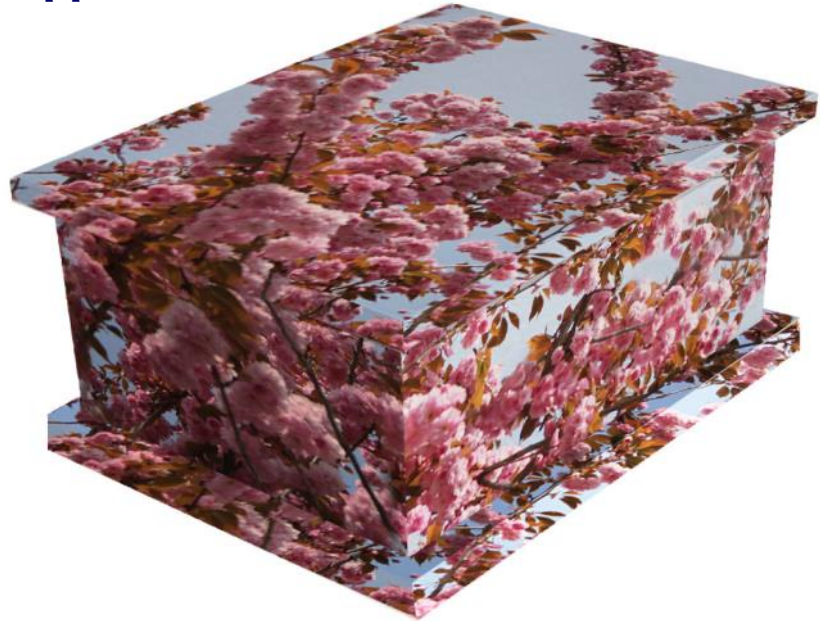
Our Family, Helping Your Family, Since 1952
www.pentrebroughton.co.uk 01978 756997 (24hrs)

Vinyl Wrapped Caskets

Single Casket ~ £165.00

Double Casket ~ £255.00

Shown here in the Spring Blossom design



Designed primarily with interment in mind there is an existing range spanning hundreds of design ideas however custom graphics to incorporate virtually any theme or personal request can be created at no extra charge (subject to Trademark laws). Graphics are adhered using a vinyl wrap to an MDF casket usually supplied with lowering rings and engraved name plate however wording can be within the artwork.

Our Family, Helping Your Family, Since 1952

www.pentrebroughton.co.uk 01978 756997 (24hrs)

Artiste Wooden Caskets



Bespoke Artiste Casket ~ £185.00

Designed primarily with interment in mind the Artiste Range incorporate have bespoke wording or images engraved upon as many panels of the MDF casket as required and then your choice of custom colour finish applied. Supplied with lowering rings where appropriate for interment and with an inscribed name plate if this is your preferred option.

Our Family, Helping Your Family, Since 1952

www.pentrebroughton.co.uk 01978 756997 (24hrs)

Natural Woven Burial Caskets



Water Hyacinth Casket ~ £55.00



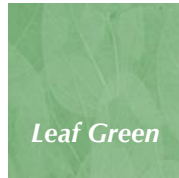
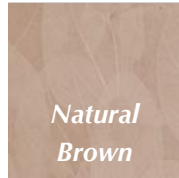
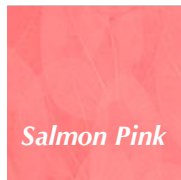
Bamboo Lattice Casket ~ £55.00

Made from responsibly sourced materials these caskets offer a softer and more natural appearance than our traditional ranges. Equally suitable for interment in a traditional of 'Green' environment they are supplied with waterproof calico lining and laser etched name plaque.

Our Family, Helping Your Family, Since 1952

www.pentrebroughton.co.uk 01978 756997 (24hrs)

Biodegradable Leaf Urns



Biodegradable Leaf Urns ~ £45.00

Made from colour dyed and layered leaves upon a corrugated cardboard frame this range of natural urn is most suitable for burial and is provided with a calico liner and laser etched inscription.


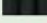


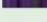

Our Family, Helping Your Family, Since 1952

www.pentrebroughton.co.uk 01978 756997 (24hrs)

Natural Woven Urns



Natural Woven Willow Urns ~ £125.00

-  *Navy*
-  *Green*
-  *Orange*
-  *Burgundy*
-  *Pink*
-  *Turquoise*
-  *Black*
-  *Red*
-  *Brown*
-  *Yellow*
-  *Purple*
-  *Royal Blue*

Hand woven from responsibly sourced English Willow in Somerset these urns are suitable for burial or retention at home. They are supplied with a calico liner, laser etched plaque and are suitable for a coloured woven band from the range above for additional personalisation.

Our Family, Helping Your Family, Since 1952

www.pentrebroughton.co.uk 01978 756997 (24hrs)

Where Can a Scattering of Cremated Remains Take Place?

Remains are treated equally whether an individual is cremated or buried, therefore legally the scattering of Cremated Remains should only take place on one of the three settings listed below. The scattering of Cremated Remains upon grave spaces is hugely discouraged as this renders graves unable to accept further interments of any kind without their disturbance, likewise these scatterings are not officially recorded in Church/Cemetery registers which would result in a refusal to permit any works to memorials.

Garden of Remembrance

A traditional option for the scattering of Cremated Remains involves a Garden of Remembrance at a crematorium, here in Wrexham we're very fortunate to have the stately gardens at Pentrebychan Crematorium which date back over 150 years. Each crematorium will have it's own rules and regulations with regards to the scattering of ashes and accompanying registers to enable family members to be scattered upon the same plot when requested. Further information about Pentrebychan's Gardens of Remembrance follows this page.

Private Land

Almost all the land (including National Parks) in England and Wales is privately owned. Legally, the scattering of cremated remains on private land should only be done after permission has been obtained from the land owner.

Public Land

Where public land is available (currently limited to only Exmoor in England and very small areas in rural Scotland) there are no laws prohibiting the scattering of cremated remains.

Our Family, Helping Your Family, Since 1952

www.pentrebroughton.co.uk 01978 756997 (24hrs)

Pentrebychan Crematorium's Gardens of Remembrance



Walled Garden



Wisteria Walk



Lily Pool



Daffodil Meadow

In Pentrebychan Crematorium's 40 acre (16 ha) grounds families may choose to have remains strewn in any of four gardens. All remains are strewn on plots which are numbered, recorded and can be easily identified. The four beautifully maintained gardens are; the Lily Pool and Daffodil Meadow (semi-natural woodland areas and home to many native plant and animal species) and the Walled Garden and Wisteria Walk (more formalised and scented arenas). Maps for the gardens can be found in the main office, contactable on 01978 292050.

Our Family, Helping Your Family, Since 1952

www.pentrebroughton.co.uk 01978 756997 (24hrs)

Themed Scattertubes



When Cremated Remains are being strewn somewhere other than a Crematorium the use of a Scattertube is highly recommended to facilitate the scattering in a dignified manner. The top portion of the tube is removed and the Remains are strewn much closer to ground level removing interference from adverse weather. Available in several sizes to accommodate portions of Remains where applicable.

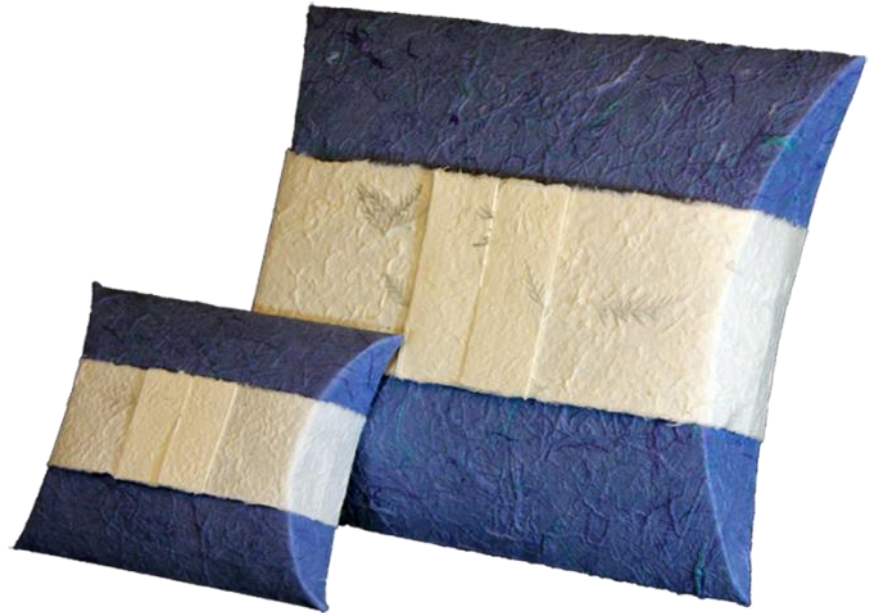
Our Family, Helping Your Family, Since 1952

www.pentrebroughton.co.uk 01978 756997 (24hrs)

Biodegradable Passages Urns

Large Passages Urn ~ £45.00

Small Passages Urn ~ £25.00



Passage Urns are made from compressed recycled paper formed into a pillow shape which contains the Cremated Remains inside. Their purpose is for release onto a body of water (at least 18" deep) where they will float for a few minutes before the paper begins to dissolve and the remains are then dispersed into the water in a dignified fashion. Available in two sizes to accommodate either a portion or the entire Cremated Remains.

Our Family, Helping Your Family, Since 1952

www.pentrebroughton.co.uk 01978 756997 (24hrs)

Travelling Overseas

People commonly wish to have their Cremated Remains scattered at a significant venue overseas. When this is the case, there are certain legal requirements that must be adhered to. These are generally as follows:

1. The Remains, no matter what container they are placed in, should be hermetically sealed, we are able to provide this service using a metallic based material which is then heat sealed with appropriate labelling. It is airport scanner friendly and aids smooth Customs clearance.
2. The Remains should be generally accompanied by two documents:
 - a) The Certificate of Cremation.
 - b) A Funeral Director's Declaration completed upon sealing.



We would also advise that when taking Cremated Remains overseas that you follow these steps:

- Inform your Airline in advance, many will then apply a note to your travel record so it is not a surprise to any handling officer when they are located.
- Carry the Remains in your hand luggage so they are easily accessible for declaration.

Ultimately, we are only able to give advice on this matter. It is the sole responsibility of the person carrying the ashes to ensure that they have met all the legal requirements necessary.

Our Family, Helping Your Family, Since 1952

www.pentrebroughton.co.uk 01978 756997 (24hrs)

Spun Metal Urns



Spun Metal Sambrook Urn ~ £75.00

The most traditional urn in our range, the Sambrook spun steel urn is available in the two colours illustrated and also limited stock of emerald green. Suitable for storing Cremated Remains for a significant period of time the Remains are placed in a calico lining bag. Please note that the lid to these urns is not permanently fixed.

Our Family, Helping Your Family, Since 1952

www.pentrebroughton.co.uk 01978 756997 (24hrs)

Pewter Urns



The Pewter Classic

Full Size ~ £307.00
Keepsake Size ~ £66.00

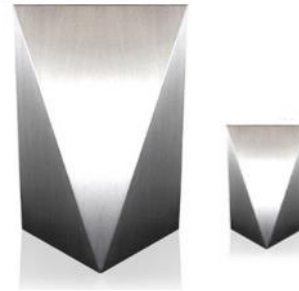
The Pewter Halcyon

Full Size ~ £358.00
Keepsake Size ~ £87.00



The Pewter Pacific

Full Size ~ £396.00
Keepsake Size ~ £87.00



The Pewter Accord

Full Size ~ £358.00
Keepsake Size ~ £87.00

Hand crafted from Pewter in the U.K. this range of modern urns are available in two sizes designed to accommodate either a keepsake portion of the entire Cremated Remains. They have a brushed metal finish and threaded seal to safely contain the Remains.

Our Family, Helping Your Family, Since 1952

www.pentrebroughton.co.uk 01978 756997 (24hrs)

Keepsake Urns



Traditional Style Keepsake Urns

£45.00 ~ £265.00



There is a vast and continually expanding range of keepsake urns available to our clients, from the traditional to the contemporary many of these are now designed as subtle artistic items to be placed at home in complete discretion to their purpose. Please speak to us about the range and options available.

(Pictures in this booklet are for illustrative purposes only and may not be accurate of comparative sizing)

Our Family, Helping Your Family, Since 1952

www.pentrebroughton.co.uk 01978 756997 (24hrs)

Memorial Glass Items



Table Art



Wall Art



Window Suncatcher

One of the more recent options opened to families now is the inset of Cremated Remains into glass - either in the form of art pieces such as those shown here or in the form of memorial jewellery on the page which follows. The options and variants of these ranges expands extremely quickly so please don't hesitate to speak to us if this is something of interest to you.

Our Family, Helping Your Family, Since 1952

www.pentrebroughton.co.uk 01978 756997 (24hrs)



Ashes into Glass

“When someone you love becomes a memory... that memory becomes a treasure... Ashes into Glass® is the leading creator of ashes jewellery for our clients in the UK and worldwide. Fine jewellery for you to connect with your loved one by wearing it or just holding it in your hand”.



Cufflinks

£395 ~ £845



Earrings

£195 ~ £395



Paperweight

£295



Charm Bead

£125 ~ £195



Round Pendant

£245 ~ £495



Heart Pendant

£295 ~ 525



Heart Ring

£325 ~ £495



Signet Ring

£345 ~ £525



Tribute Ring

£295 ~ £475



Clear



Purple



Blue



Ruby



Green



Black

For a wider range of options, up-to-date pricing and information on the ‘Halo Range’ please visit

www.ashesintoglass.co.uk

Please feel free to ask a member of our team for an order form

Our Family, Helping Your Family, Since 1952

www.pentrebroughton.co.uk 01978 756997 (24hrs)

What if I can't find what I'm looking for?

Whilst in this booklet we have showcased a wide variety of the options available to accommodate a loved ones Cremated Remains this is by no means the full extent of choice. The range of urns, caskets, keepsakes, options and ideas changes greatly with each passing month - please do not hesitate to speak to us if you have other thoughts or ideas which are not shown within this literature.



Our Family, Helping Your Family, Since 1952

www.pentrebroughton.co.uk 01978 756997 (24hrs)

DESIGNED AND PRINTED BY

ROBERTS BROS.

ROBERTS BROS IS A TRADING NAME OF

RBF SERVICES (WREXHAM) LTD.

REGISTERED COMPANY NO. 8217405.

REGISTERED OFFICE: ST. ANDREWS HOUSE,

YALE BUSINESS VILLAGE, ELLICE WAY, WREXHAM.

RB
Printshop